

Panting Score Reference Chart

Panting scores are monitored on a scale of 0 to 4.5.

Panting Score 0



No panting
Difficult to see chest movement

Panting Score 1



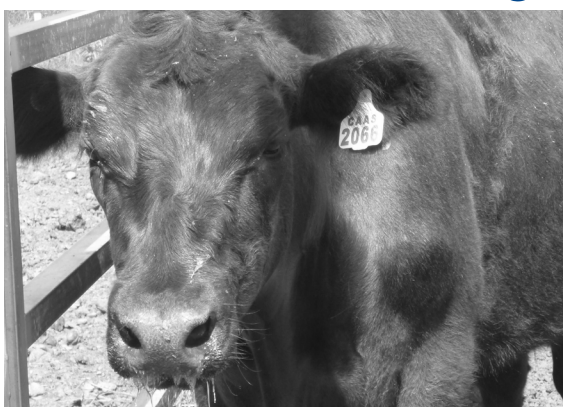
Slight panting, mouth closed,
no drool or foam
Easy to see chest movement

Panting Score 2

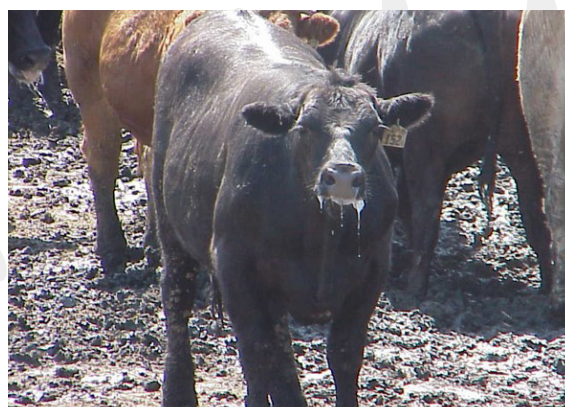


Fast panting with drool and foam
No open mouth panting

Panting Score 2.5



Fast panting with drool and foam.
Occasional open mouth panting.



Panting Score 3



Open mouth, drooling
and neck extended.
Head usually up.

Panting Score 3.5



Open mouth, drooling and neck extended.
Tongue out slightly.

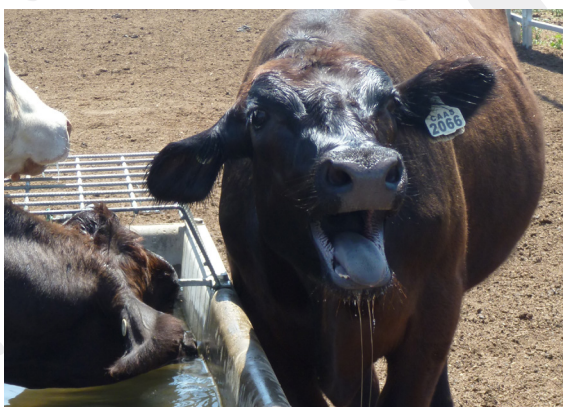


Panting Score 4



Open mouth, drooling and
neck very extended.
Tongue well out.

Panting Score 4.5



Open mouth, drooling and neck very extended.
Tongue out, and head down. Flanks often heave with forced breathing.



Phibro Animal Health
Suite 416, 14 Lexington Drive
Bella Vista NSW 2153
Phone 02 9616 3700