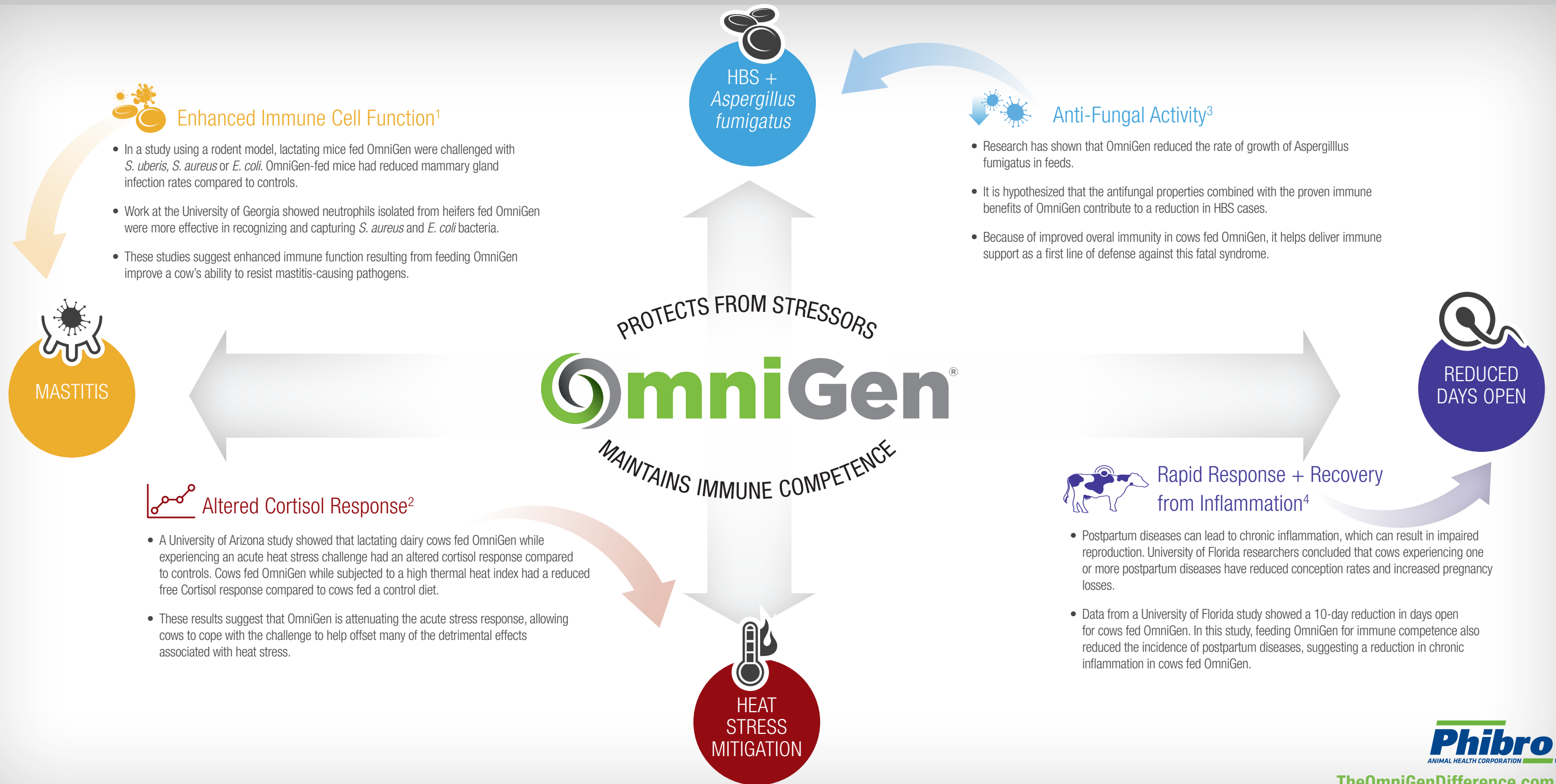


HOW OMNIGEN[®] DELIVERS

SEE HOW OMNIGEN PRODUCTS WORK TO SUPPORT DAIRY CATTLE HEALTH



FOR INTERNAL USE ONLY OG450921GLB-R0221 ©2021 Phibro Animal Health Corporation. Phibro, Phibro logo design and OmniGen are trademarks owned by or licensed to Phibro Animal Health Corporation or its affiliates.

Phibro
ANIMAL HEALTH CORPORATION

TheOmniGenDifference.com

¹ Nace, E. L. et al. 2014. Modulation of innate immune function and phenotype in bred dairy heifers during the periparturient period induced by feeding an immunostimulant 60 days prior to delivery. *Vet. Immunol. Immunopathol.* 161:240-250. | Rowson et al. 2011. Effects of an immunomodulatory feed additive on the development of mastitis in a mouse infection model using bovine-origin isolates. *Animal*, 5:220-229 | Ryman, V. E. et al. 2013. Effects of dietary supplementation on the antimicrobial activity of blood leukocytes isolated from Holstein heifers. *Res. Vet. Sci.* 95:969-974.

² McBride, M. L. et al. 2020. Response to adrenocorticotropic hormone or corticotrophin-releasing hormone and vasopressin in lactating cows fed an immunomodulatory supplement under thermoneutral or acute heat stress conditions | *J. Dairy Sci.* 103:6612-6626

³ Puntenney, S. B. et al. 2003. Mycotic Infections in Livestock: Recent Insights and Studies on Etiology, Diagnostics, and Prevention of Hemorrhagic Bowel Syndrome. *Proceedings of the Southwest Nutrition Conference*. Pp 49-63. | Chapman, J. D. 2007. Results of an 18 Month Case Study at a Minnesota Dairy When Diets Were Supplemented with OmniGen-AF. OG1010107.

⁴ Casarotto, L. T. et al. 2020. Effect of feeding an immune modulator to multiparous Holstein cows during the dry period and early lactation on health, milk and reproductive performance. *Anim. Feed. Sci. Technol.* 267:1-9. | Ribeiro, E. S. et al. 2016. Carryover effect of postpartum inflammatory diseases on developmental biology and fertility in lactating dairy cows. *J. Dairy Sci.* 99:2201-2220. | Casarotto, L. T. et al. 2020a *J. Dairy Sci.* 103 (Suppl. 1):40. (Abstr).